

IceScoreDP

ISU Judging System (IJS) Scoreboard Software for Data Projectors

Installation / Setup Guide

Version 1.1.9

WXtoImg Software
Auckland, New Zealand

<http://www.icedance.org.nz/icescoredp/>

Installation / Setup

To network or not to network

IceScoreDP operates in a very flexible manner. IceScoreDP may be run on the same machine as ISUCalcFS or may be run on a different machine. A web browser (Internet Explorer or Firefox) used to display the results on the projector may be run on the same machine as either IceScoreDP or ISUCalcFS or on a completely separate machine. In addition multiple web browsers can be setup on different machines allowing, for instance, the announcer to have his/her own display.

The machine running the web browser provides the output for the projector, so you will need a second display output (common on many laptops) if you intend to use the machine running ISUCalcFS for doing everything.

Installation

Once you've decided where to install IceScoreDP, just click on the IceScoreDP installation package and follow the instructions.

It is highly recommended, particularly on Windows Vista, that IceScoreDP be installed in C:\IceScoreDP rather than in the default location.

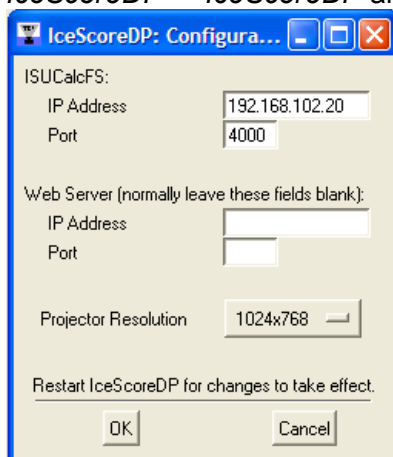
ISUCalcFS Ini File Configuration

You can edit the ISUCalcFS ini-file by selecting *Edit Ini-File* in the *Special* menu of the ISUCalcFS program. You will need to edit the [OSISPublic1] configuration to similar to below. The *IP Address* must be a valid IP address for the machine ISUCalcFS is running on. You can use 127.0.0.1 if you are going to run IceScoreDP on the same machine.

```
[OSISPublic1]
Alias=Osis
IPServer=1
IPAddress=192.168.102.20
IPPort=4000
Portnum=99
```

IceScoreDP Configuration

Start IceScoreDP by clicking on the Desktop Icon or using *Start -> All Programs -> IceScoreDP -> IceScoreDP* and select *Configuration...* from the *File* menu.



Fill in the ISUCalcFS IP address and Port number you used in the ISUCalcFS ini file. Leave the Web Server IP address and Port blank. Click **Save**.

Enter the resolution you want to use on the projector. If the screen is standard 4:3 size, then choose 1024x768, if both the screen and projector are widescreen (16:9) use 1280x768 or 1280x800. Your projector must support the resolution you have chosen. If you are unsure use 1024x768.

Exit IceScoreDP and restart it for the changes to take effect.

Starting up IceScoreDP and ISUCalcFS

You should start IceScoreDP before starting ISUCalcFS, although it is not critical. What is important is that **IceScoreDP must be running before you select “Run Competition”** in ISUCalcFS. In the Info window of ISUCalcFS you will see a line like:

```
Osis Socket 4000 Connection established
```

when IceScoreDP is connected.

It is important to understand that when “Run Competition” is selected in ISUCalcFS, that ISUCalcFS sends important information about the event and segment to IceScoreDP and that this information is not sent again. The information includes the name of the event and the names of all the competitors. If IceScoreDP is started after “Run Competition” has been selected, then the event name and competitor’s names will not appear on the scoreboard.

Configuring the video adapter for the projector

The video adapter that the projector is connected to must be set to 1024x768, 1280x768 or 1280x800 pixels, this must be the *Projector Resolution* chosen in IceScoreDP Configuration above, and the video projector must support the resolution chosen. Use the Display settings in the Windows Control Panel to configure this (it’s under the Settings tab). If you are using a second video output on a laptop, you will also need to select “Extend my Windows desktop onto this monitor”.

The screen saver should also be set to “None” and monitor power should be set to “always on”.

Configuring the web browser

Firefox is recommended. This browser allows the entire display to be used for the scoreboard. Internet Explorer (IE) can also be used but always displays a scrollbar on the right side of the screen. Also, if Internet Explorer is not running on the same machine as IceScoreDP, it will always display a status bar at the bottom of the screen. The scroll and status bars on IE can be very distracting when using a black background. But more importantly the scrollbar on IE will sometimes prevent the complete display of results.

Start Firefox (recommended) or Internet Explorer (IE). By default, IceScoreDP runs on port 8080, so the URL for the scoreboard will be something like:

```
http://127.0.0.1:8080/  
http://192.168.102.44:8080/
```

depending on your network and on what machine IceScoreDP is running on.

Drag the browser onto the appropriate screen if needed (make sure it is minimised before you attempt this).

Disable all the status bars and toolbars by unselecting them in the view menu. This is the same for both IE and Firefox.

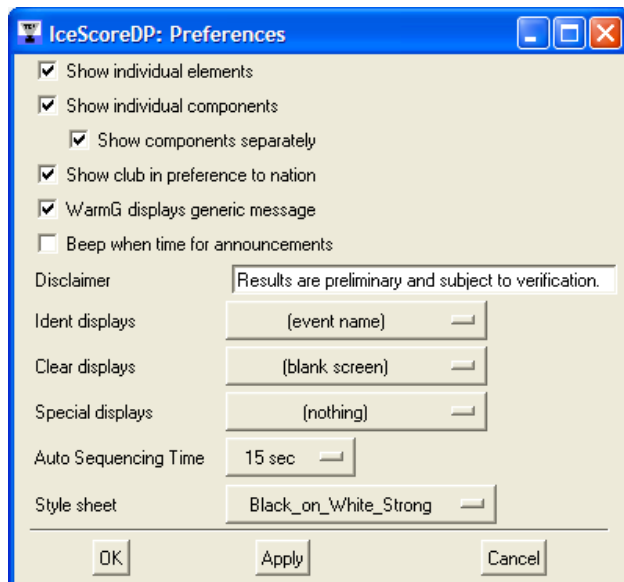
Press F11 to enter full screen mode.

In IE, right click on the full screen toolbar at the top and select *Auto-hide*. Then think about using Firefox. Firefox can be obtained free from:

<http://www.mozilla.com/firefox/>

Preferences

IceScoreDP provides a number of configuration options for controlling what is presented by ISUCalcFS.



Show individual elements

If selected then the *1st Score* button on ISUCalcFS displays all the elements and their values and the TES score at the bottom in bold. Otherwise, the *1st Score* button will display the total program components score.

Show individual components

If selected the individual program components and their values are displayed (e.g. Skating Skills, Transitions, Interpretation, etc.) ISU rules require this to be enabled during ISU competitions.

Show components separately

This controls whether the program components are shown on the same page as the total score, it has effect only when “Show individual components” is enabled.

Note that what is shown by the *1st Score*, *2nd Score*, and *3rd Score* buttons is controlled by how the above three preferences are set.

Show club in preference to nation

Displays the competitor's club under their name instead of their nation. Commonly used for club, regional and national championships, this should also be enabled at ISU Inter-Club Internationals to conform to ISU rules. Note that if this is selected and the club is left blank then the nation will be shown (and if this is not selected and the nation is left blank, then the club will be shown.)

WarmG displays generic message

In smaller club competitions, warm-up groups may be comprised of skaters from more than one segment. When this is enabled, the software does not display the names of the skaters in the warm-up group when *WarmG* is pressed, since ISUCalcFS has no concept of warm-up groups spanning multiple segments. This isn't a disadvantage, because *Start List* will display the skaters in the current warm-up group and functions little differently to *WarmG* when this is disabled.

Beep when time for announcements

If enabled, causes the computer running IceScoreDP to beep when the results are available, when warm-ups are 1 minute from ending and when warm-ups end. The beep used is the system beep, which doesn't always function on all laptops.

Disclaimer

Displays this message on the bottom of the *I.Result* and *Result* pages. Typically set to something like "Results are provisional and subject to change."

Ident Displays

The ISUCalcFS *Ident* button will simply show the name of the event when set to the default "(event name)". However you can supply an HTML fragment (HTML code that would sit in a web page between the <body> tags) by placing an HTML file with the .HTM extension in the IceScoreDP program folder. You can select these .HTM files as an alternative page to display for *Ident*.

Clear Displays

The ISUCalcFS *Clear* button will simply show a blank screen when set to the default "(blank screen)". However you can supply an HTML fragment (HTML code that would sit in a web page between the <body> tags) by placing an HTML file with the .HTM extension in the IceScoreDP program folder. You can select these .HTM files as an alternative page to display for *Clear*.

Special Displays

Special can only be selected from the Display menu on IceScoreDP. If it is set to "(nothing)" it will simply not function. However you can supply an HTML fragment (HTML code that would sit in a web page between the <body> tags) by placing an HTML file with the .HTM extension in the IceScoreDP program folder. You can select these .HTM files as an alternative page to display for Special.

Auto Sequencing Time

Specifies the time in seconds each .HTM file is displayed before going to the next one in a sequence. If set to manual, the next .HTM file is displayed each time *Ident* is pressed.

Style Sheet

Controls the presentation of the results. `Black_on_White_Strong` provides the best contrast and is recommended in most environments.

Page Sequencing

In addition to being able to select individual `.HTM` pages for display with *Ident*, *Clear*, and *Special*, IceScoreDP allows for a sequence of `.HTM` pages to be defined. When a sequence of pages is selected, then the pages are displayed in turn, changing every few seconds or each time the *Ident* or *Clear* buttons are pressed or *Special* is selected. To create a sequence, simply place the names of `.HTM` files in a text file, one per line, give the file an `.SEQ` extension, and place the `.HTM` files and the `.SEQ` file in the IceScoreDP program folder.

Note that files with a `.HTML` extension are reserved for internal use by IceScoreDP.

Alternate Results Display

IceScoreDP provides two alternate displays of the results. The first is the results page for the current segment, showing all the competitors who have finished skating. It can be found at `/results.html`, e.g.:

```
http://127.0.0.1:8080/results.html
```

The second is the results page for the last completed segment, showing all the competitors who participated. It can be found at `/final.html`, e.g.:

```
http://127.0.0.1:8080/final.html
```

Live Results

IceScoreDP generates updated web pages for an event after each skater/team's results have been displayed. These web pages have the same names as the standard web pages created by ISUCalcFS, and can be found in a sub-directory of the program folder (under the event name *Short Name*, or *results* if this is blank).

By transferring the web pages generated by IceScoreDP to the webserver, live results can be made available to the world. IceScoreDP generates proper meta-expires and meta-refresh tags so that the web pages will be automatically updated for those watching live results on the web.

Before uploading IceScoreDP generated web pages, you first need to generate the HTML pages from ISUCalcFS and place them on the webserver. Then simply transfer the HTML page generated by IceScoreDP to the webserver after each competitor.

You can automate the process of updating the website with live results. Auto FTP Manager (available from another source and not supplied) can be easily configured to upload any changed HTML files to the webserver – replacing the starting order in the first instance, and then adding competitors after each result is available.

Overriding the ISUCalcFS Operator

IceScoreDP allows an operator to change what is displayed on the scoreboard from the IceScoreDP software itself.

Under the IceScoreDP **Display** menu selecting:

Ident

has the same effect as if the ISUCalcFS operator pressed the `Ident` button. What is displayed can be configured under Preferences.

Clear

has the same effect as if the ISUCalcFS operator pressed the `Clear` button. What is displayed can be configured under Preferences.

Special

displays the page/information shown in Preferences. This function is not available from any ISUCalcFS button and may be used to display additional special information for an event. The default is that nothing happens.

Name Sources

IceScoreDP uses the competitors *Complete Name** from Competitor's Basic Data in ISUCalcFS in all places except for the *Result* and *I.Result* where the *Paper Short Name** is used instead. For categories and segments, *Name* is used (not *TV Name*). The event name comes from *Event Name* (not *List Name*). The event *Short Name* is used for the folder name where HTML live results are created/updated.

* These may be changed by using IceScoreDP's expert settings.

Expert Settings

IceScoreDP allows a few settings to be configured in its ini-file (`IceScoreDP.ini`). These settings can all be found near the bottom under `[Expert]`. Do not make changes to other settings in the ini-file other than those shown here. To restore all settings, simply remove `IceScoreDP.ini`.

MaxJudgesPerPage

Sets the number of judges shown per page when *Send All Judges* is pressed. The default is 7. This should not be changed unless a user supplied, custom Style Sheet is being used.

MaxSkatersPerPage

Sets the number of competitors shown per page when *Start List*, *WarmG*, *I.Result*, or *Result* are pressed. The default is 7, but other factors like the size of the warm-up group and whether a heading exists (e.g. in *Result*) will alter the actual number shown. This should not be changed unless a user supplied, custom Style Sheet is being used.

MaxElementLines

Sets the number of lines of elements shown (2 per line) when *1st Score* is pressed in some circumstances. The default is 7. This should not be changed unless a user supplied, custom Style Sheet is being used.

DetailName

Sets the ISUCalcFS source for competitor's names displayed everywhere except for *I.Result* and *Result*. The default is `DetailName="Full_Name"`. Options are:

<code>"Full_Name"</code>	<i>Complete Name</i> in ISUCalcFS
<code>"Short_Name"</code>	<i>Paper Short Name</i> in ISUCalcFS
<code>"TV_Long_Name"</code>	<i>TV Name Long</i> under <i>Additional Names</i> in ISUCalcFS
<code>"TV_Short_Name"</code>	<i>TV Name Short</i> under <i>Additional Names</i> in ISUCalcFS

The name must be surrounded by quotes, use underscores (not spaces) and capitalisation must be exactly as shown, otherwise competitor's names will not be visible or other errors will occur.

ResultName

Sets the ISUCalcFS source for competitor's names displayed under *I.Result* and *Result*. The default is `ResultName="Short_Name"`. See *DetailName* above for a list of choices.

MaxSegmentNameWidth

Sets the maximum number of characters for competitor's names in *I.Result*. The default is 18 for 1024x768 resolutions, and 23 for 1280x768 or 1280x800 resolutions. Manually changing the `MaxSegmentNameWidth` will prevent it from being changed when the projector resolution is changed. This should not be changed unless a user supplied, custom Style Sheet is being used.

MaxFinalNameWidth

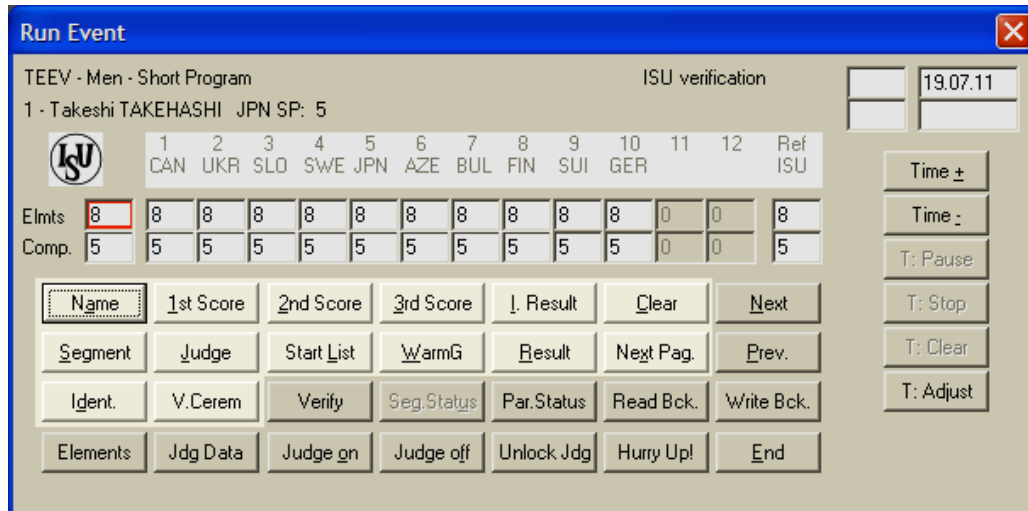
Sets the maximum number of characters for competitor's names in *Result*. The default is 14 for 1024x768 resolutions, and 19 for 1280x768 or 1280x800 resolutions. Manually changing the `MaxFinalNameWidth` will prevent it from being changed when the projector resolution is changed. This should not be changed unless a user supplied, custom Style Sheet is being used.

LogXML

Used internally for debugging purposes only. The default is 0.

Controlling the Scoreboard

How the ISUCalcFS buttons affect the scoreboard



Name

Displays only the currently selected skater's name and nation/club on the scoreboard. See *IceScoreDP Preferences* to configure whether nation or club is preferred. The clock is also displayed.

1st Score

Calculates results, and displays the score. Pressing this button will display the technical elements if they are enabled in *IceScoreDP Preferences*, otherwise this will show the skaters total score. It is important to always press this button after each skater because it is the only time results are sent to IceScoreDP.

2nd Score

Displays the TES, PCS, individual components, deductions, and the TSS. You can control whether the individual components are shown or not in *IceScoreDP Preferences*.

If you have enabled both show individual elements and show components separately then this will display only the program components score instead.

3rd Score

Displays all the TSSs for all skaters in the current segment. Where multiple pages are needed, displays the skater showing some skaters scores before and after the current skater. The current skater is highlighted.

I. Result

Displays all the TSSs for all skaters in the current segment (see also *Next Pag.*) The current skater is highlighted.

Result

Displays final result scores. Differs from *I. Result* in that it displays the total points rather than the TSS. It also displays the rank in all segments. If you use this during the first segment of a multiple segment category you will get the same display as *I.Result*. Always displays the first page first. Current skater is highlighted. See also *Next Pag.*

Segment

Displays the current category and segment (e.g. "Ladies – Short Program"). The clock is also displayed.

Start List

Displays a list of skaters for the current segment by warm-up group. Each warm-up group appears on a separate page with the current warm-up group displayed first. If the current skater is the last skater of a warm-up group, then the next warm-up group is displayed first. See *Next Pag.* to display the other warm-up groups for the segment. The clock is also displayed.

Judge

You can display an individual official's name and title by clicking *send* next to their name, otherwise you can show all the officials, by clicking *send all judges*. Use *Next Pag* to show all the officials if they don't fit on one page. The clock is also displayed.

WarmG

By default, WarmG displays a generic message about warm-up for the event and shows the clock. This is useful when a competition has skaters for multiple segments warming up together as it is not possible to display a list of names for multiple segments. Because *Start List* provides a warm-up group listing, use *Start List* for warm-up groups where you want to display the skaters' names. You can change the behaviour of the *WarmG* button so that it functions like *Start List* in *IceScoreDP Preferences*.

Next Pag.

Displays next page of *Start List*, *I.Result*, *Result*, or *Judge*. If the last page is displayed, then pressing *Next Pag.* will display the first page.

V.Cerem

Used to display the medalists for the category. *Send Victory Ceremony* displays all medalists and all other participants. *Send Podium* shows only the medalists. *Send Gold*, *Silver* or *Bronze*, reveals just the medalists down to that position.

Ident

By default, this displays the name of the current event. However you can change this to any `.HTM` document located in the IceScoreDP folder, by changing the option in Preferences. If you select a sequence file (`.SEQ`) then the contents of the file are `.HTM` documents which are displayed at intervals. The clock is not displayed.

Clear

Displays the name of the current event. However you can change this to any `.HTM` document located in the IceScoreDP folder, by changing the option in Preferences. The clock is not displayed.